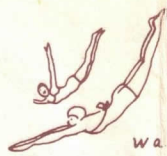




Fish in Lake Blanca or the North Fork.



Swim in warm mineral water.



Just resting.



Ride the horses!

HISTORY

Over 20 varieties of wild flowers — Berries Too!



DESCRIPTION

The resort is located in a level valley at 1500-foot elevation. The surrounding mountains rise to five and six thousand feet. Much of the area is covered with virgin timber, some single trees being valued at five or six thousand dollars.

The climate is moderate. The regular season opens in May and closes in October. Accommodations are available the rest of the year by reservation. A friendly, Christian atmosphere prevails.

The Lodge includes — 22 bedrooms, comfortable living room, pleasant dining room where family-style dinners are served, a basement recreation room, the store and coffee shop.

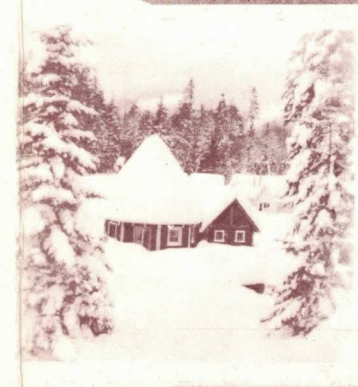
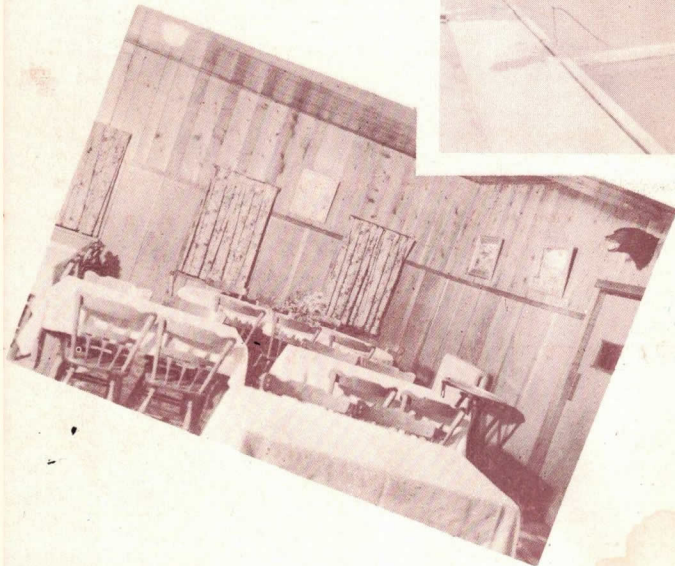
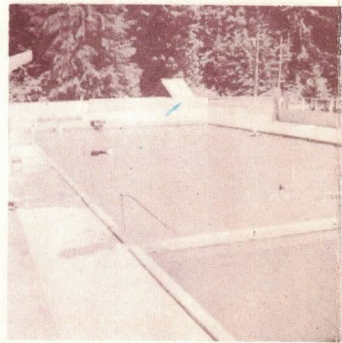
The Cottages — 20 furnished cottages, bedding furnished. Cooking utensils and dishes furnished on request.

The Springs — Healthful mineral water for drinking, bathing and swimming.

Children's play area — Sand box, swings, stories and baby-sitting.

Christian Fellowship — Sunday services at 10:30 A. M. and 3:30 P. M. Informal singtimes and firesides.

Children's Dude Ranch — For children from 8 to 16. Store and dining room closed during Sunday services. No liquor permitted on the grounds.



Badminton, Croquet, Volley ball, Horseshoes & Pingpong.



Lunches packed for hungry hikers. Paths for strollers.

Old gold mines and claims.



Artists & Shutterbugs enjoy scenery.



Firesides & Singing.